



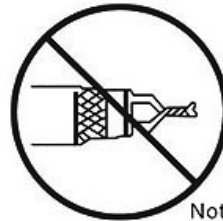
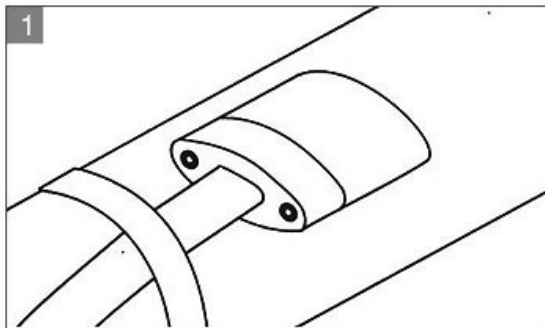
The explosion-proof terminal (tail) terminal junction box is also called the terminal head, which is used at the end of the heating belt to isolate the end of the heating belt from the outside world. Explosion-proof mark "Exell CT4". Suitable for all day Weather conditions and petroleum, chemical and other factories-Zone 2 explosive gas mixture T4 places.

3.22 尾端密封接线盒 Tail sealed wiring

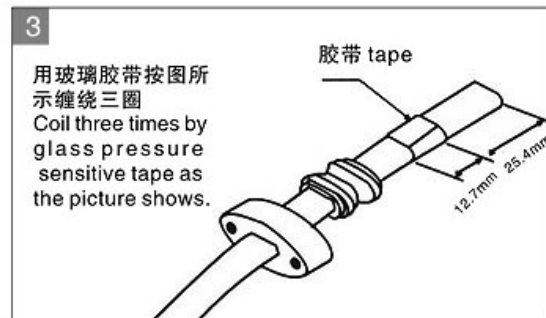
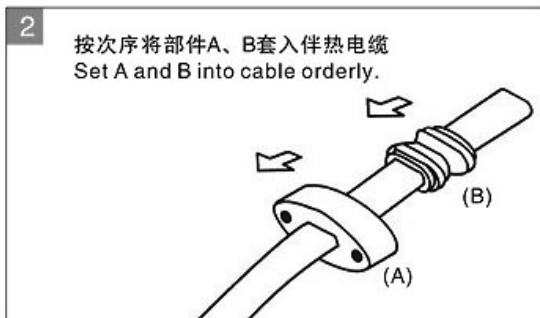
简介Brief introduction

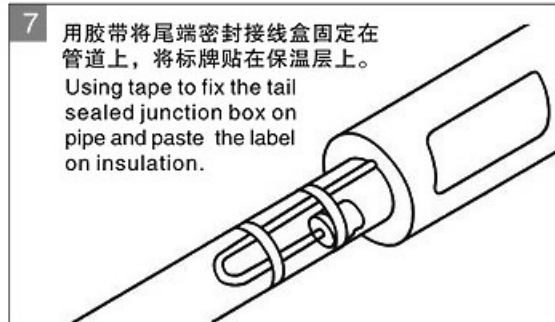
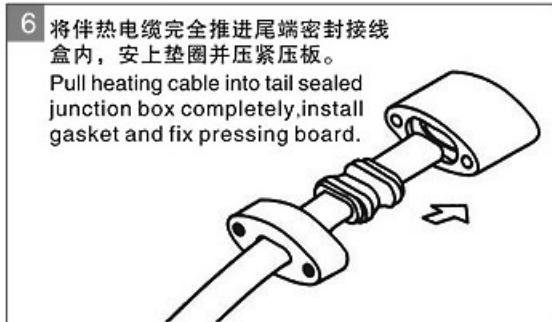
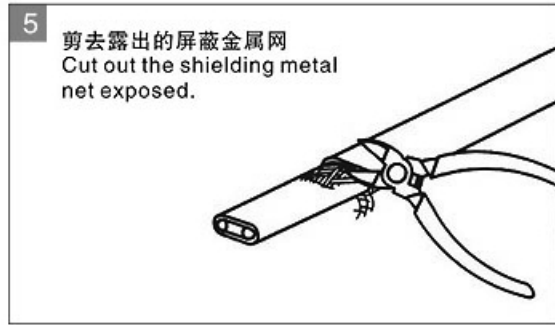
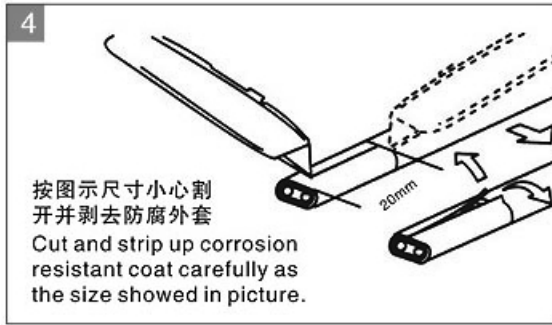
它是用于自控温伴热电缆的尾端密封接线盒。伴热线端正部安装所需材料均可放于：尾端严禁绞合

It is applied for self-regulating heating cable -which is fixed on pipe during installing,with an insulation layer out. All of the materials used for heating wire insulation could be placed in box.



注：尾端严禁绞合
Notice non-twisting in tail





It is strictly forbidden to twist the terminal of the electric heating cable. It needs to be connected with a terminal junction box and sealed. The above description of the wiring diagram guides the terminal connection method of the electric heating cable to play a better sealing effect and prevent the electric heating cable from being damp or Water ingress caused a short circuit.





[Heat Trace cable Selection and calculation](#)